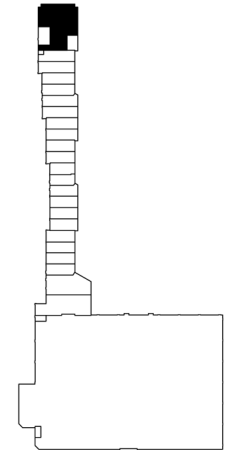
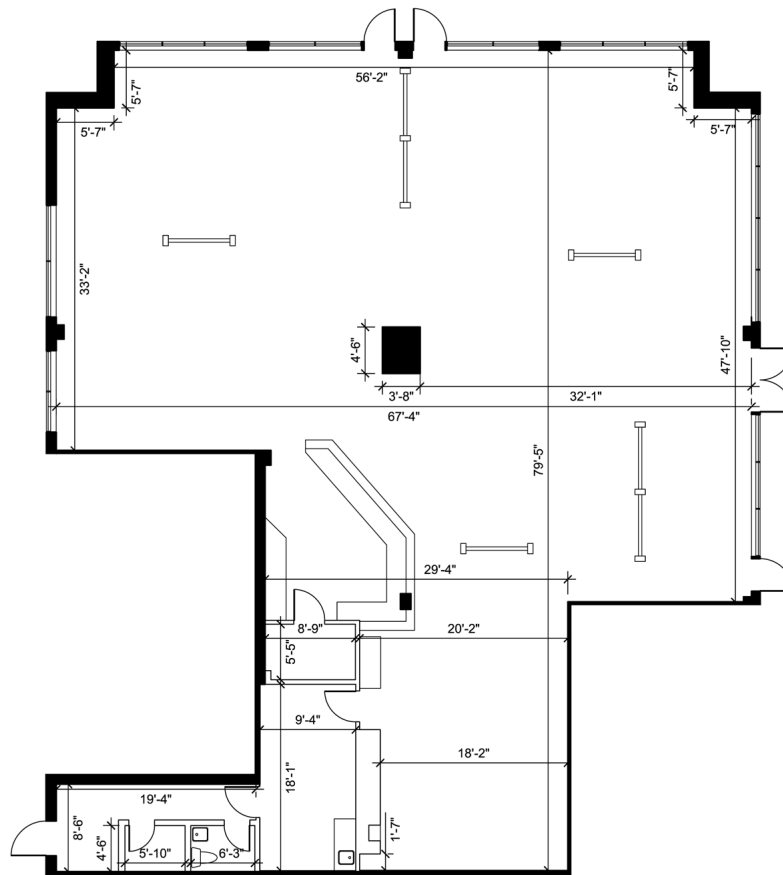


Retail - Floor Plan



KEY PLAN



UNIT 1-2
RENTABLE AREA = 4,402 SF

ABOVE INFORMATION ESTABLISHED ACCORDING TO THE BOMA/SIOR INDUSTRIAL STANDARD, ANSI/BOMA Z65.2 2012 - METHOD A

LOCATION:

16635 Yonge St.
Town of Newmarket
North-east corner of Yonge St. & Mulock Dr.



FOR MORE INFORMATION, PLEASE CONTACT:

Antoinette Grossi **905.669.9714**
Director of Leasing agrossi@metrusproperties.com

The information combined herein has been obtained from source deemed reliable; however, we do not warrant its accuracy. The information herein may change from time to time without notice. The property may be withdrawn from the market without notice.