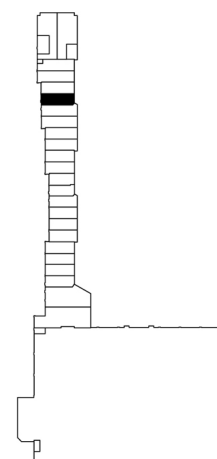
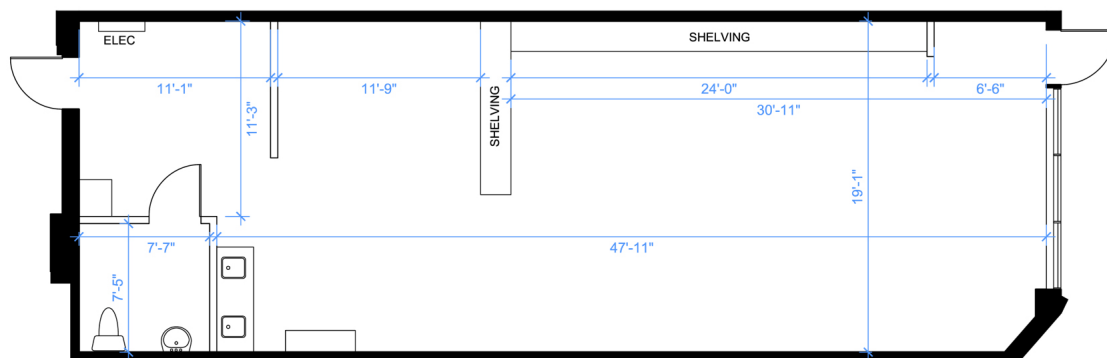


Retail - Floor Plan



KEY PLAN

0 5 15 FT.

UNIT 7
RENTABLE AREA = 1,138 SF
ABOVE INFORMATION ESTABLISHED ACCORDING
TO ANSI/BOMA Z65.2 2012 - METHOD A

LOCATION:

16635 Yonge St.
Town of Newmarket
North-east corner of Yonge St. & Mulock Dr.



FOR MORE INFORMATION, PLEASE CONTACT:

Antoinette Grossi
Director of Leasing

905.669.9714
agrossi@metrusproperties.com

The information combined herein has been obtained from source deemed reliable; however, we do not warrant its accuracy. The information herein may change from time to time without notice. The property may be withdrawn from the market without notice.