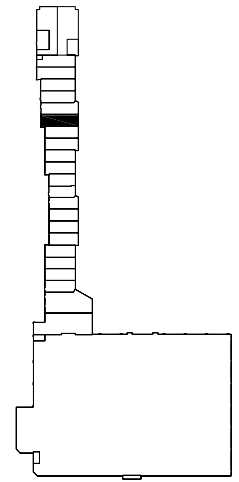
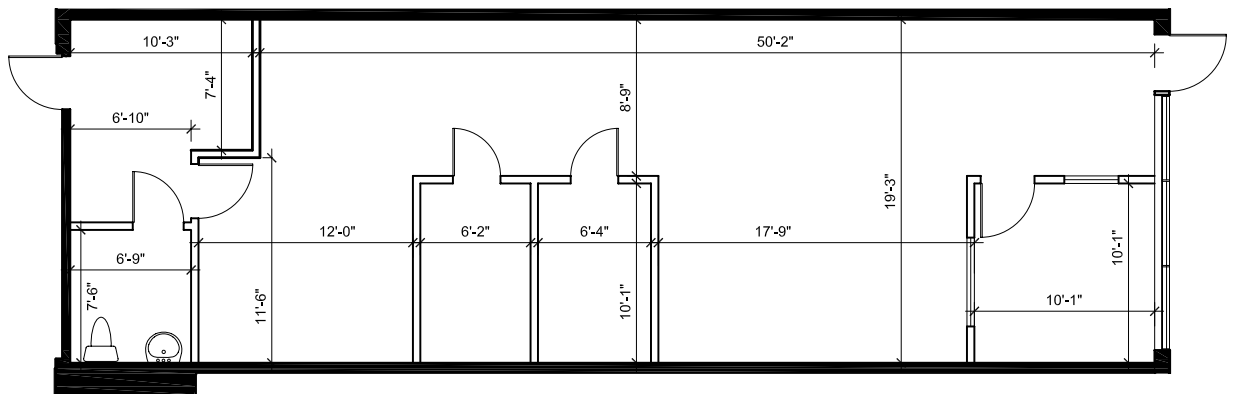


# Retail - Floor Plan



KEY PLAN



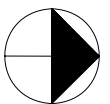
**UNIT 9**  
**RENTABLE AREA = 1,254 SF**

ABOVE INFORMATION ESTABLISHED ACCORDING  
TO ANSI/BOMA Z65.2 2009 - METHOD A

LOCATION:

**16635 Yonge St.**  
**Town of Newmarket**

North-east corner of Yonge St. & Mulock Dr.



FOR MORE INFORMATION, PLEASE CONTACT:

**Antoinette Grossi**  
Director of Leasing

**905.669.9714**  
[agrossi@metrusproperties.com](mailto:agrossi@metrusproperties.com)