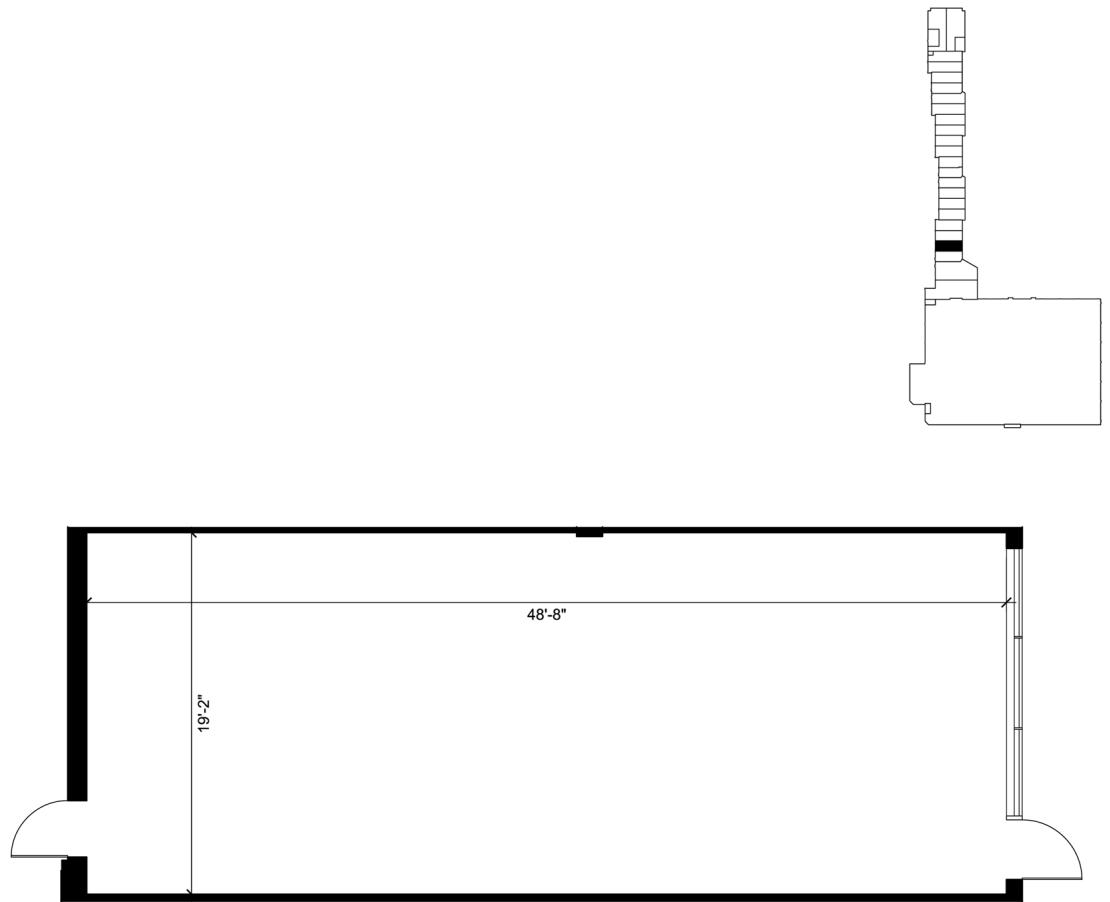


Retail - Floor Plan



UNIT 22
RENTABLE AREA = 995 SF
ABOVE INFORMATION ESTABLISHED ACCORDING
TO ANSI/BOMA Z65.2 2012 - METHOD A

LOCATION:

16635 Yonge St.
Town of Newmarket
North-east corner of Yonge St. & Mulock Dr.



FOR MORE INFORMATION, PLEASE CONTACT:

Antoinette Grossi
Director of Leasing

905.669.9714
agrossi@metrusproperties.com