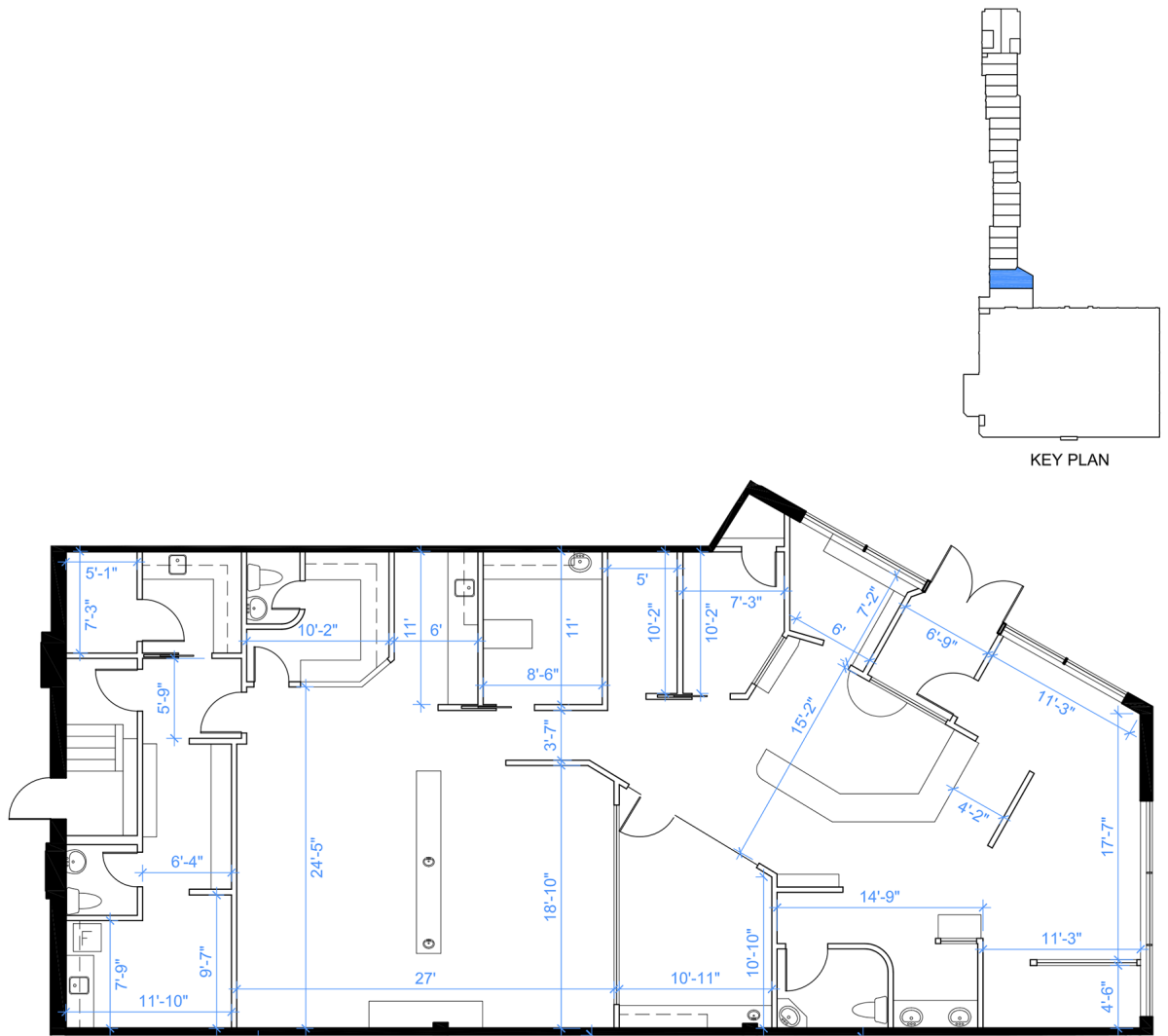


# Retail - Floor Plan



**UNIT 24A**  
**RENTABLE AREA = 2,656 SF**

ABOVE INFORMATION ESTABLISHED ACCORDING TO THE BOMA/SIOR INDUSTRIAL STANDARD, ANSI/BOMA Z65.2 2012 - METHOD A

LOCATION:

**16635 Yonge St.**  
**Town of Newmarket**

North-east corner of Yonge St. & Mulock Dr.



FOR MORE INFORMATION, PLEASE CONTACT:

**Antoinette Grossi**  
Vice President Leasing

**905.669.9714**  
[agrossi@metrusproperties.com](mailto:agrossi@metrusproperties.com)