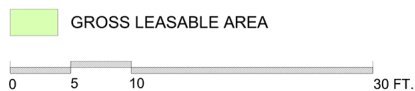
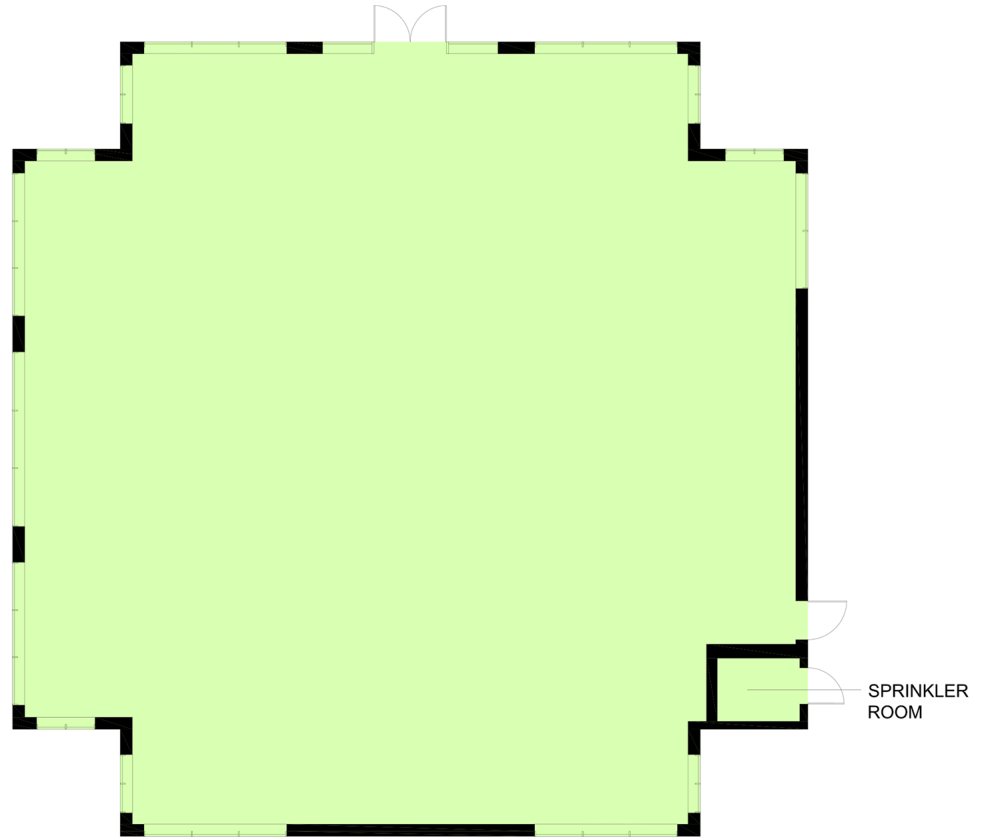


# Retail - Floor Plan



## AREA SUMMARY

	GROSS LEASABLE AREA
TOTAL	4,005 S.F.

ABOVE INFORMATION ESTABLISHED ACCORDING TO BOMA 2020 FOR RETAIL PROPERTIES: STANDARD METHOD OF MEASUREMENT (ANSI/BOMA Z65.5-2020)

## LOCATION:

**16635 Yonge St.**  
**Town of Newmarket**  
North-east corner of Yonge St. & Mulock Dr.



FOR MORE INFORMATION, PLEASE CONTACT:

**Antoinette Grossi**  
Vice President Leasing

**905.669.9714**  
[agrossi@metrusproperties.com](mailto:agrossi@metrusproperties.com)