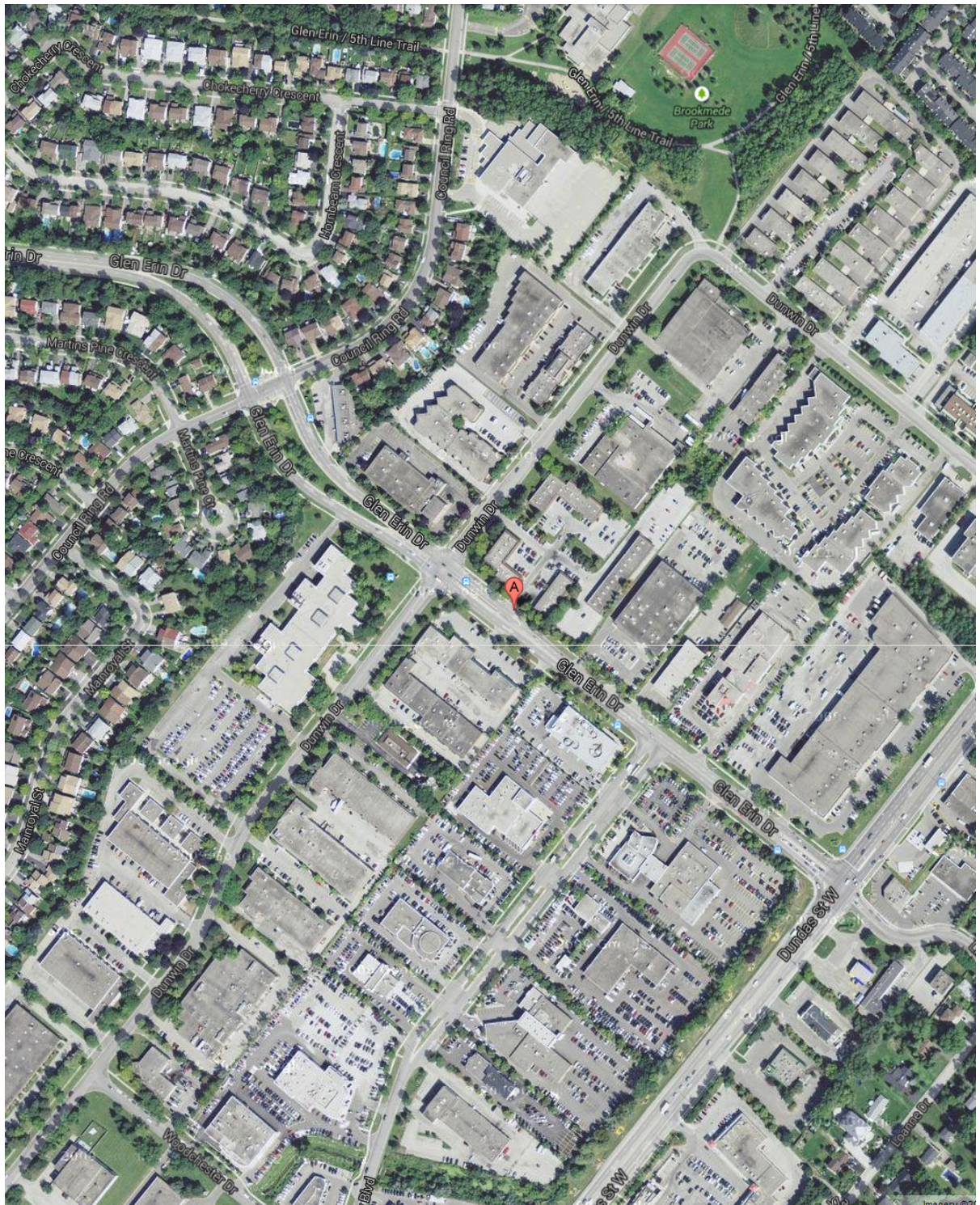


Office - Aerial View



LOCATION:

3095 Glen Erin Dr.

City of Mississauga

South of Erin Mills Pkwy, North of Dundas St. West



FOR MORE INFORMATION, PLEASE CONTACT:

Gabrielle Mair

Vice President Leasing

905.669.9714

gmail@metrusproperties.com

The information combined herein has been obtained from source deemed reliable; however, we do not warrant its accuracy. The information herein may change from time to time without notice. The property may be withdrawn from the market without notice.