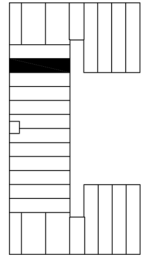
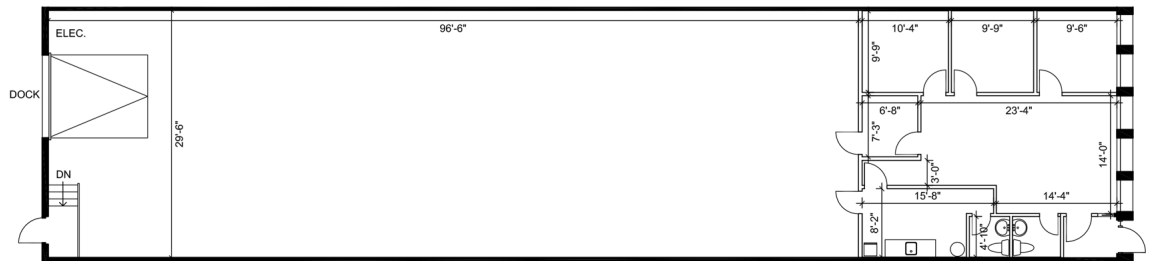


# Industrial - Floor Plan



KEY PLAN



WAREHOUSE CLEAR HEIGHT = 15'-0"



**UNIT 19**  
**RENTABLE AREA = 3,905 SF**

ABOVE INFORMATION ESTABLISHED ACCORDING  
TO BOMA / SIOR INDUSTRIAL STANDARD

LOCATION:

**250 Rayette Rd.**

**City of Vaughan**

Between Keele St. & Dufferin St. south of Langstaff Rd.



FOR MORE INFORMATION, PLEASE CONTACT:

**Gabrielle Mair**  
Director of Leasing

**905.669.9714**  
[gmair@metrusproperties.com](mailto:gmair@metrusproperties.com)