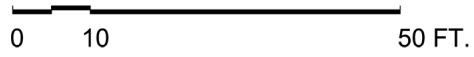
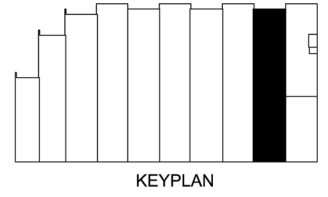
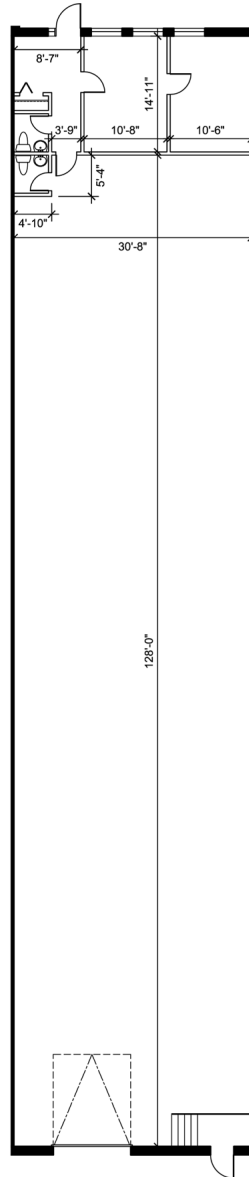


Industrial - Floor Plan



UNIT 9
RENTABLE AREA = 4,633 SF
ABOVE INFORMATION ESTABLISHED ACCORDING TO
THE BOMA INDUSTRIAL STANDARD
ANSI/BOMA Z65.2 2012 - METHOD A

LOCATION:

293 Rayette Rd.
City of Vaughan

Between Keele St. and Dufferin St. South of Langstaff



FOR MORE INFORMATION, PLEASE CONTACT:

Gabrielle Mair
Director of Leasing

905.669.9714
gmair@metrusproperties.com