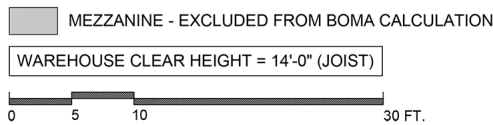
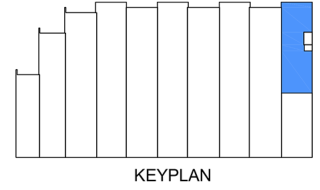
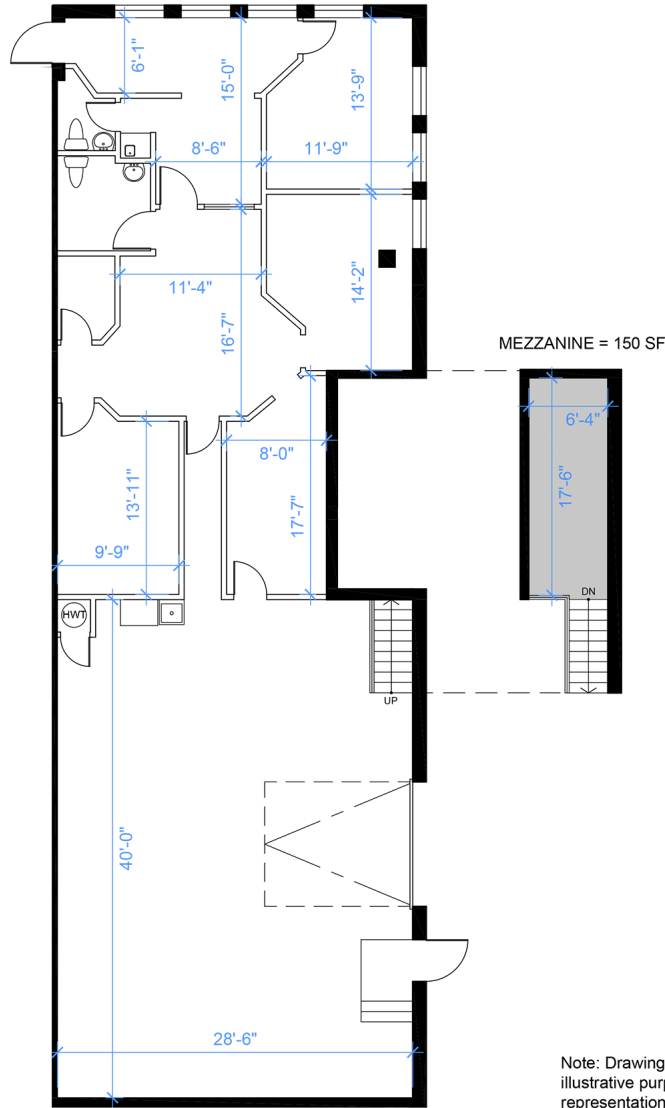


# Industrial - Floor Plan



Note: Drawings dimensions and ceiling heights are approximate and for illustrative purposes only. The Landlord and Space Database Inc. make no representation as to the accuracy and/or completeness of this information.

**UNIT 10**  
**RENTABLE AREA = 2,551 SF**  
 ABOVE INFORMATION ESTABLISHED ACCORDING  
 TO ANSI/BOMA Z65.2 2019

LOCATION:

**293 Rayette Rd.**  
**City of Vaughan**

Between Keele St. and Dufferin St. South of Langstaff



FOR MORE INFORMATION, PLEASE CONTACT:

**Gabrielle Mair**  
 Vice President Leasing

**905.669.9714**  
[gmail@metrusproperties.com](mailto:gmail@metrusproperties.com)