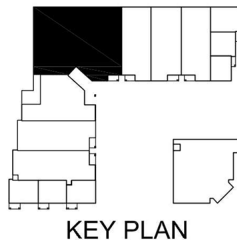
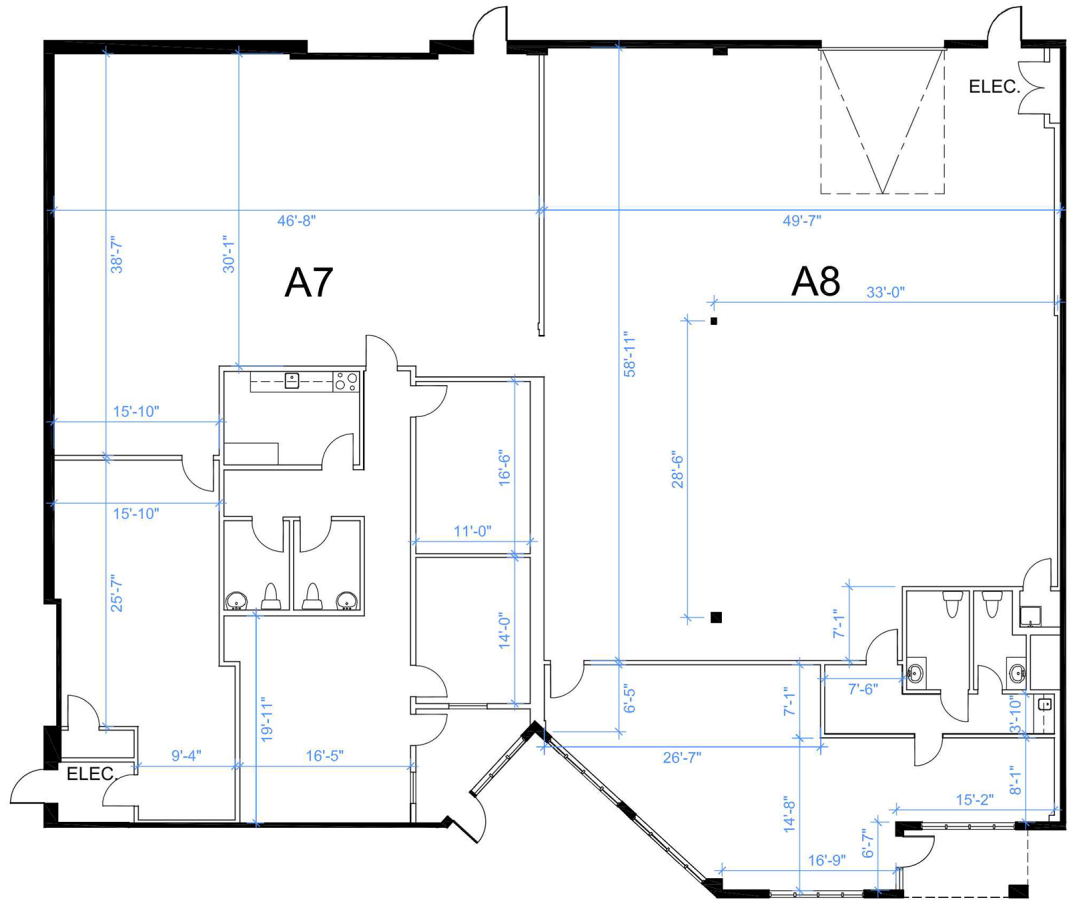


# Industrial - Floor Plan



KEY PLAN



RENTABLE AREA  
UNIT A7 = 3,570 SF  
UNIT A8 = 3,997 SF  
TOTAL = 7,567 SF

ABOVE INFORMATION ESTABLISHED ACCORDING TO THE BOMA / SIOR INDUSTRIAL STANDARD ANSI / BOMA Z65.2 2012 - METHOD A

LOCATION:

**10 West Pearce Street**  
**Town of Richmond Hill**

Corner of Leslie Street and West Pearce Street



FOR MORE INFORMATION, PLEASE CONTACT:

**Gabrielle Mair**  
Director of Leasing

**905.669.9714**  
[gmair@metrusproperties.com](mailto:gmair@metrusproperties.com)