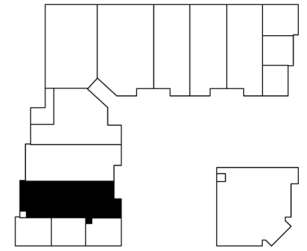
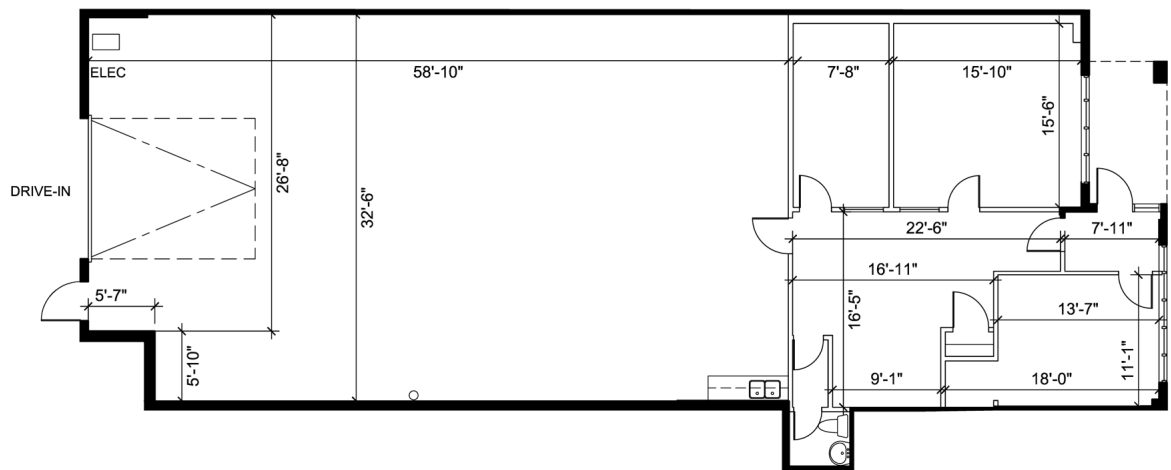


Industrial - Floor Plan



KEY PLAN



UNIT A4
RENTABLE AREA = 2,972 SF

ABOVE INFORMATION ESTABLISHED ACCORDING TO
THE BOMA / SIOR INDUSTRIAL STANDARD
ANSI / Z65.2 2012 - METHOD A

LOCATION:

10 West Pearce Street
Town of Richmond Hill

Corner of Leslie Street and West Pearce Street



FOR MORE INFORMATION, PLEASE CONTACT:

Gabrielle Mair
Vice President Leasing

905.669.9714
gmail@metrusproperties.com