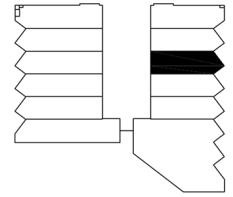
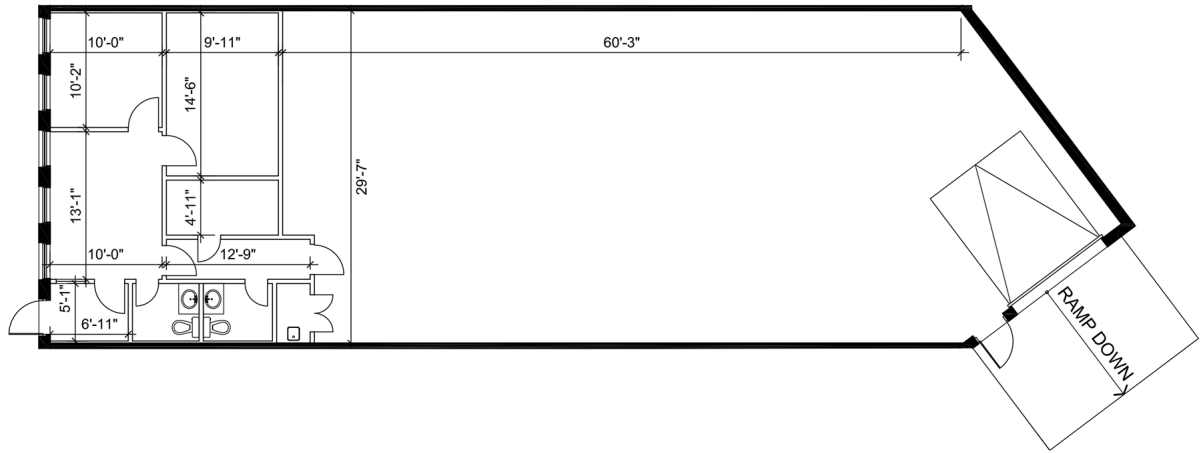


# Industrial - Floor Plan



KEY PLAN



UNIT 3  
RENTABLE AREA = 2,755 SF  
ABOVE INFORMATION ESTABLISHED ACCORDING  
TO ANSI/BOMA Z65.2-2009 - METHOD A

LOCATION:

**311-329 Rayette Rd.**

**City of Vaughan**

Between Keele St. and Dufferin St. South of Langstaff



FOR MORE INFORMATION, PLEASE CONTACT:

**Gabrielle Mair**  
Vice President Leasing

**905.669.9714**  
[gmair@metrusproperties.com](mailto:gmair@metrusproperties.com)