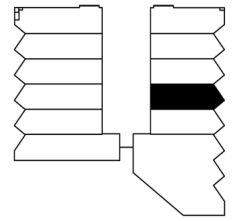
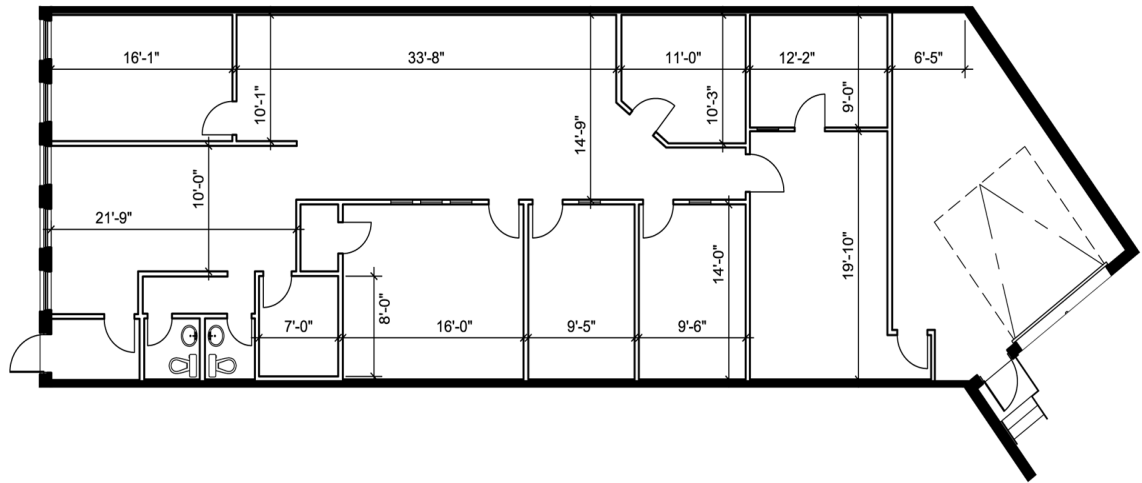


Industrial - Floor Plan



KEY PLAN



UNIT 4
RENTABLE AREA = 2,745 SF

ABOVE INFORMATION ESTABLISHED ACCORDING
TO BOMA / SIOR INDUSTRIAL STANDARD

LOCATION:

311-329 Rayette Rd.

City of Vaughan

Between Keele St. and Dufferin St. South of Langstaff



FOR MORE INFORMATION, PLEASE CONTACT:

Gabrielle Mair
Director of Leasing

905.669.9714
gmair@metrusproperties.com