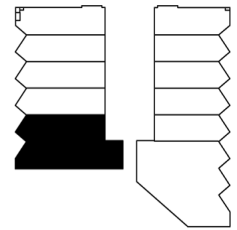
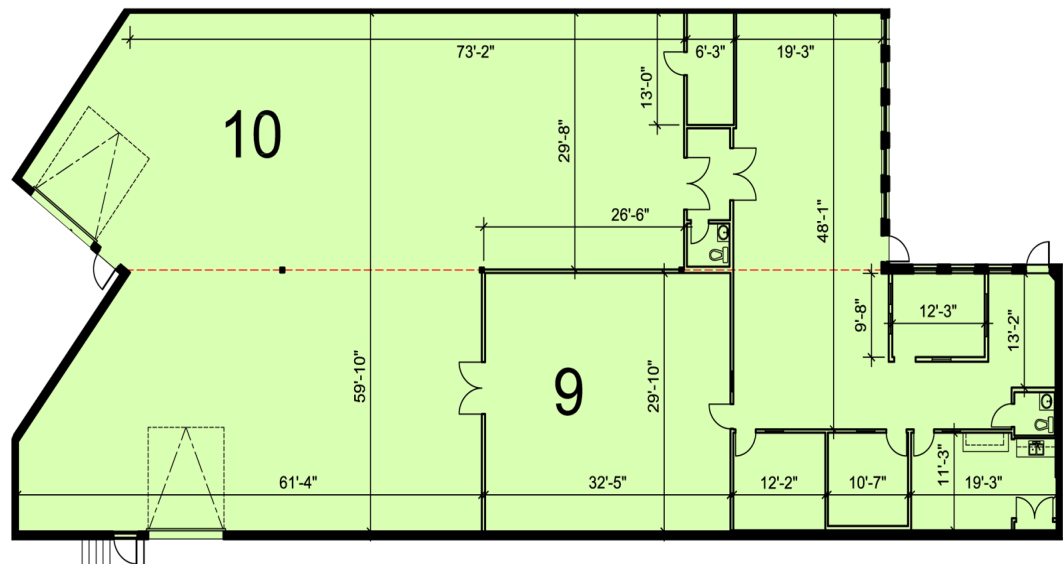


Industrial - Floor Plan



KEY PLAN



0 10 50 FT.

RENTABLE AREA
UNIT 9 = 4,246 SF
UNIT 10 = 3,308 SF
TOTAL = 7,554 SF

ABOVE INFORMATION ESTABLISHED ACCORDING
TO THE BOMA / SIOR INDUSTRIAL STANDARD

LOCATION:

311-329 Rayette Rd.

City of Vaughan

Between Keele St. and Dufferin St. South of Langstaff



FOR MORE INFORMATION, PLEASE CONTACT:

Gabrielle Mair
Director of Leasing

905.669.9714
gmair@metrusproperties.com

The information combined herein has been obtained from source deemed reliable; however, we do not warrant its accuracy. The information herein may change from time to time without notice. The property may be withdrawn from the market without notice.