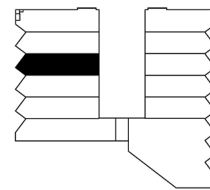
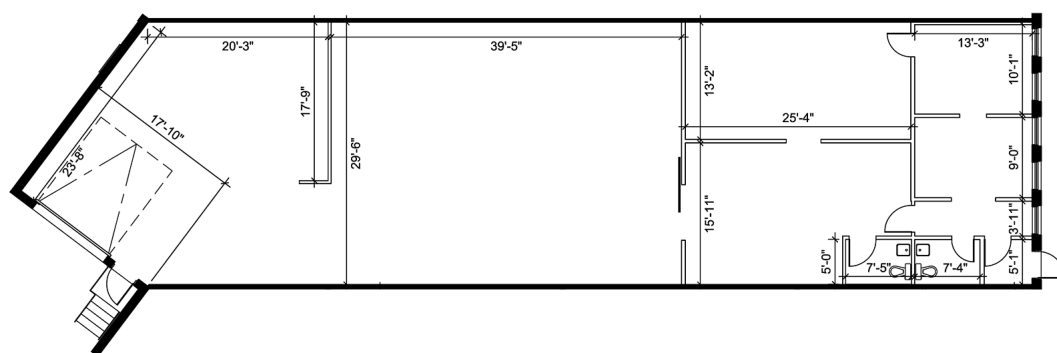


Industrial - Floor Plan



KEY PLAN



WAREHOUSE CLEAR HEIGHT = 14'-0"



UNIT 12
RENTABLE AREA = 3,307 SF
ABOVE INFORMATION ESTABLISHED ACCORDING TO THE
BOMA INDUSTRIAL STANDARD, ANSI / BOMA Z65.2 2012 - METHOD A

LOCATION:

311-329 Rayette Rd.

City of Vaughan

Between Keele St. and Dufferin St. South of Langstaff



FOR MORE INFORMATION, PLEASE CONTACT:

Gabrielle Mair
Vice President Leasing

905.669.9714
gmair@metrusproperties.com

The information combined herein has been obtained from source deemed reliable; however, we do not warrant its accuracy. The information herein may change from time to time without notice. The property may be withdrawn from the market without notice.