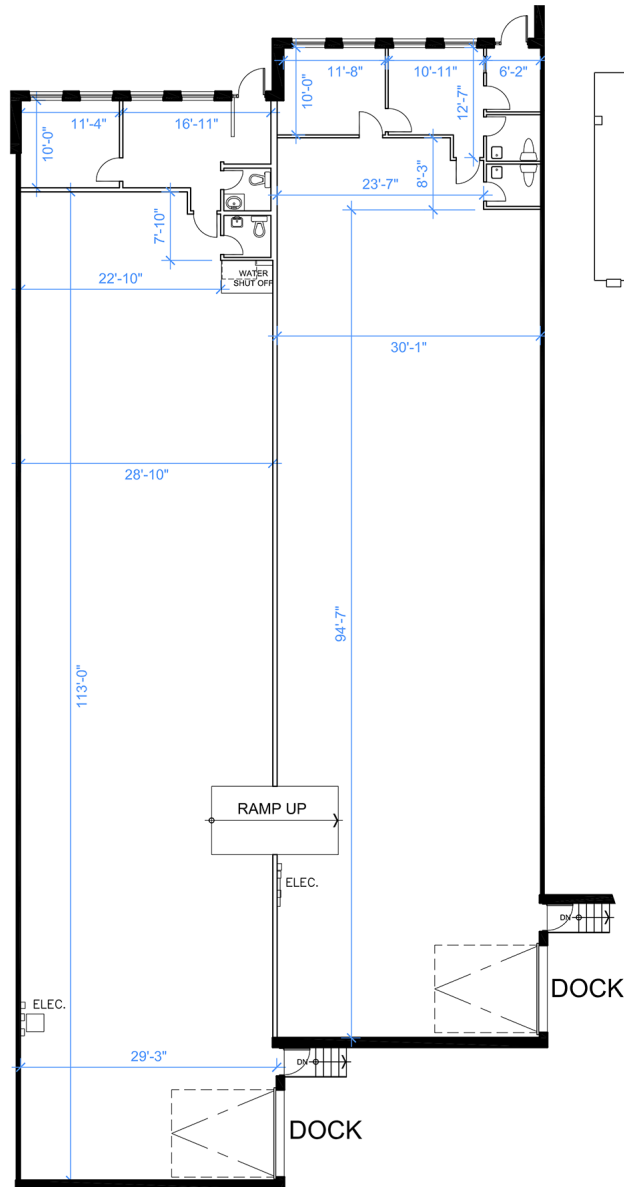


Industrial - Floor Plan



WAREHOUSE CLEAR HEIGHT = 14'-2"

0 10 50 FT.

UNIT 5-6
RENTABLE AREA = 7,333 SF
 ABOVE INFORMATION ESTABLISHED ACCORDING TO
 THE BOMA INDUSTRIAL STANDARD
 ANSI/BOMA Z65.2 2012 - METHOD A

LOCATION:

355 Rayette Rd.
City of Vaughan

Between Keele St. and Dufferin St. South of Langstaff



FOR MORE INFORMATION, PLEASE CONTACT:

Gabrielle Mair
 Vice President Leasing

905.669.9714
gmail@metrusproperties.com

The information combined herein has been obtained from source deemed reliable; however, we do not warrant it's accuracy. The information herein may change from time to time without notice. The property may be withdrawn from the market without notice.