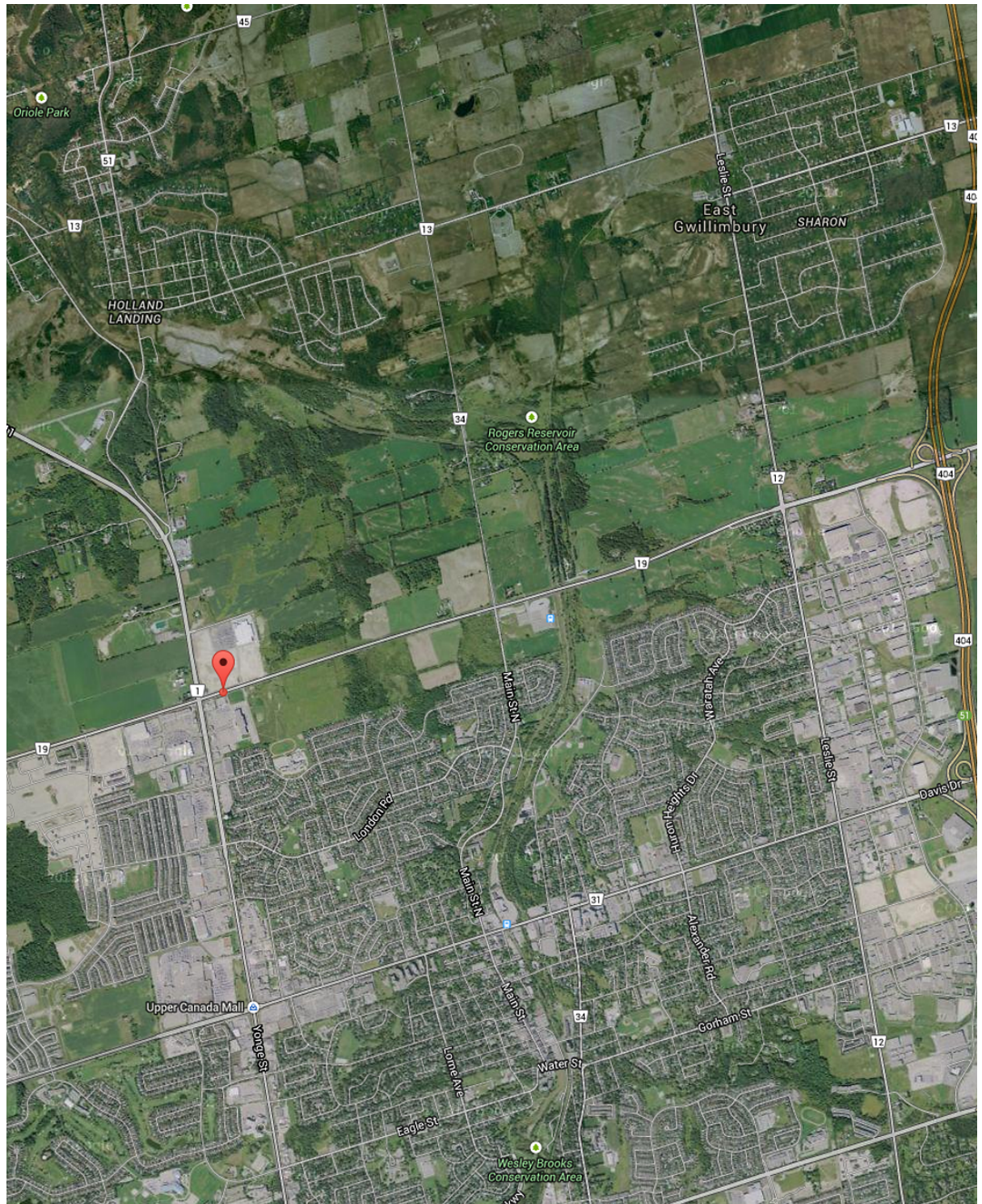


# Retail - Aerial View



LOCATION:

## **181 Green Lane East** **Town of East Gwillimbury**

South-east corner of Yonge St. & Green Lane



FOR MORE INFORMATION, PLEASE CONTACT:

**Antoinette Grossi**  
Vice President Leasing

**905.669.9714**  
[agrossi@metrusproperties.com](mailto:agrossi@metrusproperties.com)

The information combined herein has been obtained from source deemed reliable; however, we do not warrant its accuracy. The information herein may change from time to time without notice. The property may be withdrawn from the market without notice.