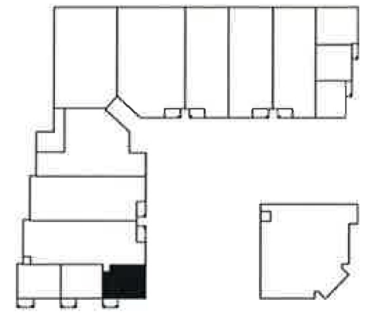
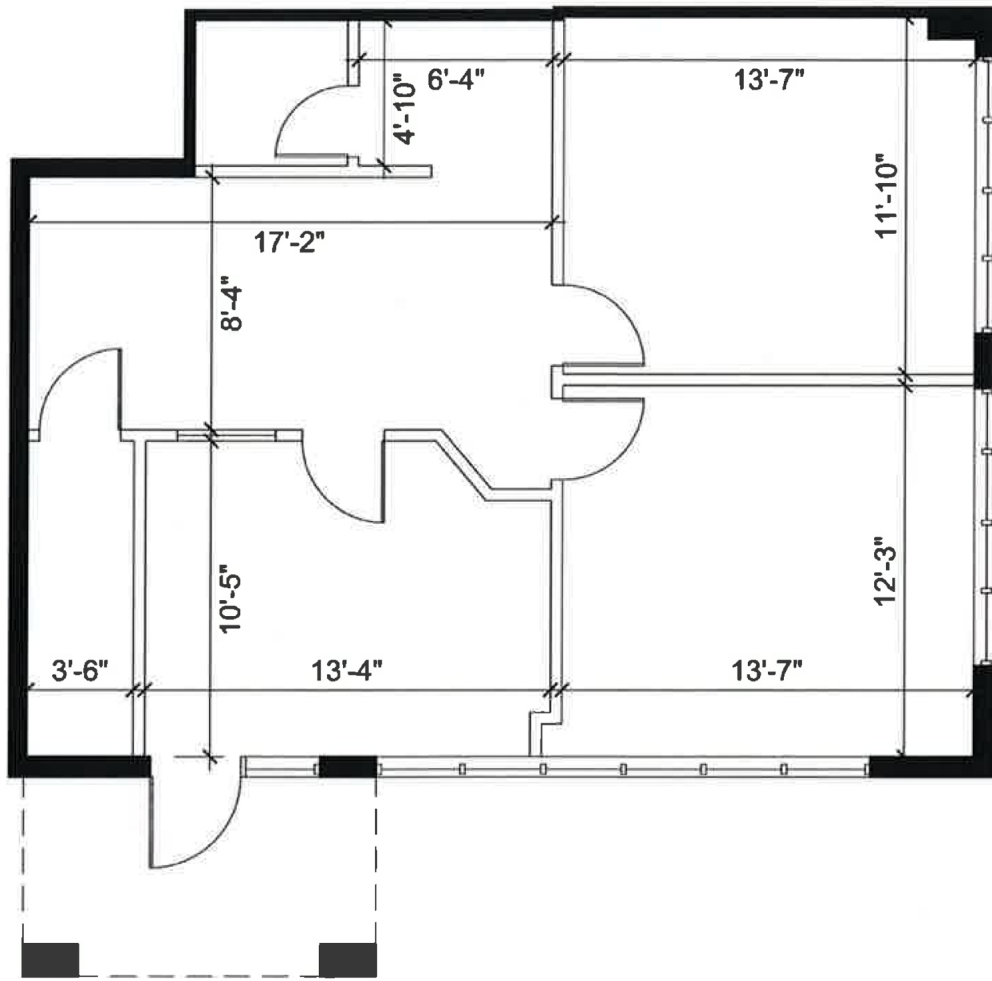


Office - Floor Plan



KEY PLAN

LOCATION:

10 West Pearce St.
Town of Richmond Hill

Corner of Leslie Street and West Pearce Street



FOR MORE INFORMATION, PLEASE CONTACT:

Gabrielle Mair
Director of Leasing

905.669.9714
gmair@metrusproperties.com