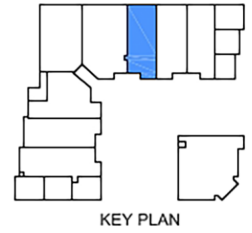
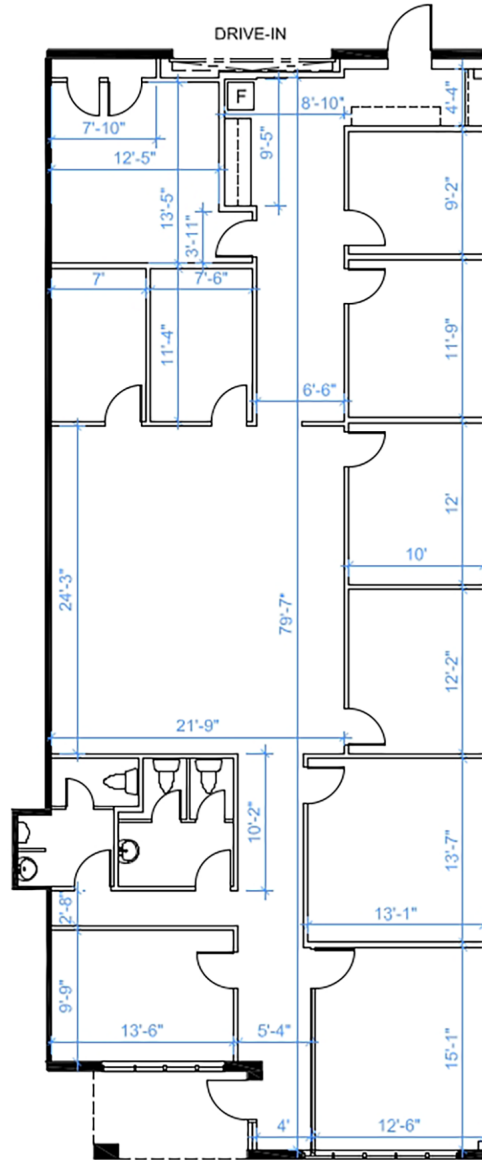


Office - Floor Plan



Note: Drawings dimensions are approximate and for illustrative purposes only. The Landlord and Space Database Inc. make no representation as to the accuracy and/or completeness of this information.



UNIT A9
RENTABLE AREA = 2,644 SF
ABOVE INFORMATION ESTABLISHED ACCORDING TO
THE BOMA / SIOR INDUSTRIAL STANDARD
ANSI / Z65.2 2012 - METHOD A

LOCATION:

10 West Pearce St.
Town of Richmond Hill
Corner of Leslie Street and West Pearce Street



FOR MORE INFORMATION, PLEASE CONTACT:

Gabrielle Mair
Vice President Leasing

905.669.9714
gmair@metrusproperties.com