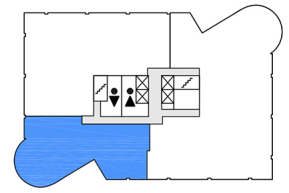
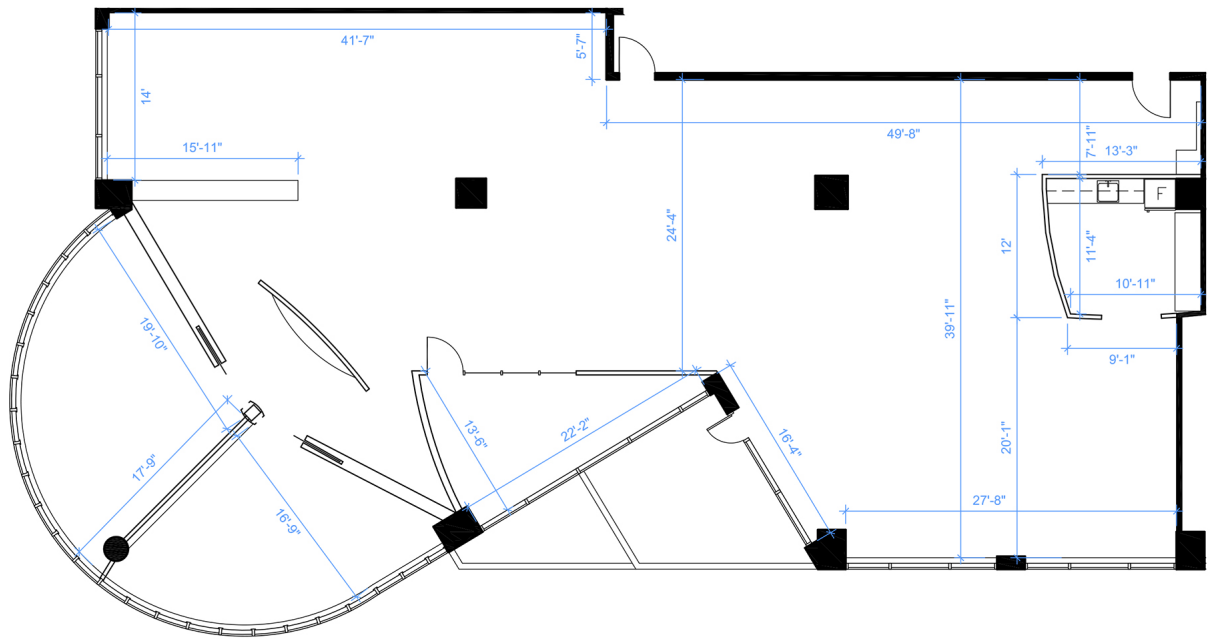


Office - Floor Plan



KEYPLAN



SUITE 710
RENTABLE AREA = 4,606 SF
ABOVE INFORMATION ESTABLISHED ACCORDING
 TO BOMA / ANSI Z65.1 2010 - METHOD B

LOCATION:

45 Vogell Road
Town of Richmond Hill
 16th Avenue & Highway 404



FOR MORE INFORMATION, PLEASE CONTACT:

Gabrielle Mair
 Vice President Leasing

905.669.9714
gmail@metrusproperties.com

The information combined herein has been obtained from source deemed reliable; however, we do not warrant it's accuracy. The information herein may change from time to time without notice. The property may be withdrawn from the market without notice.