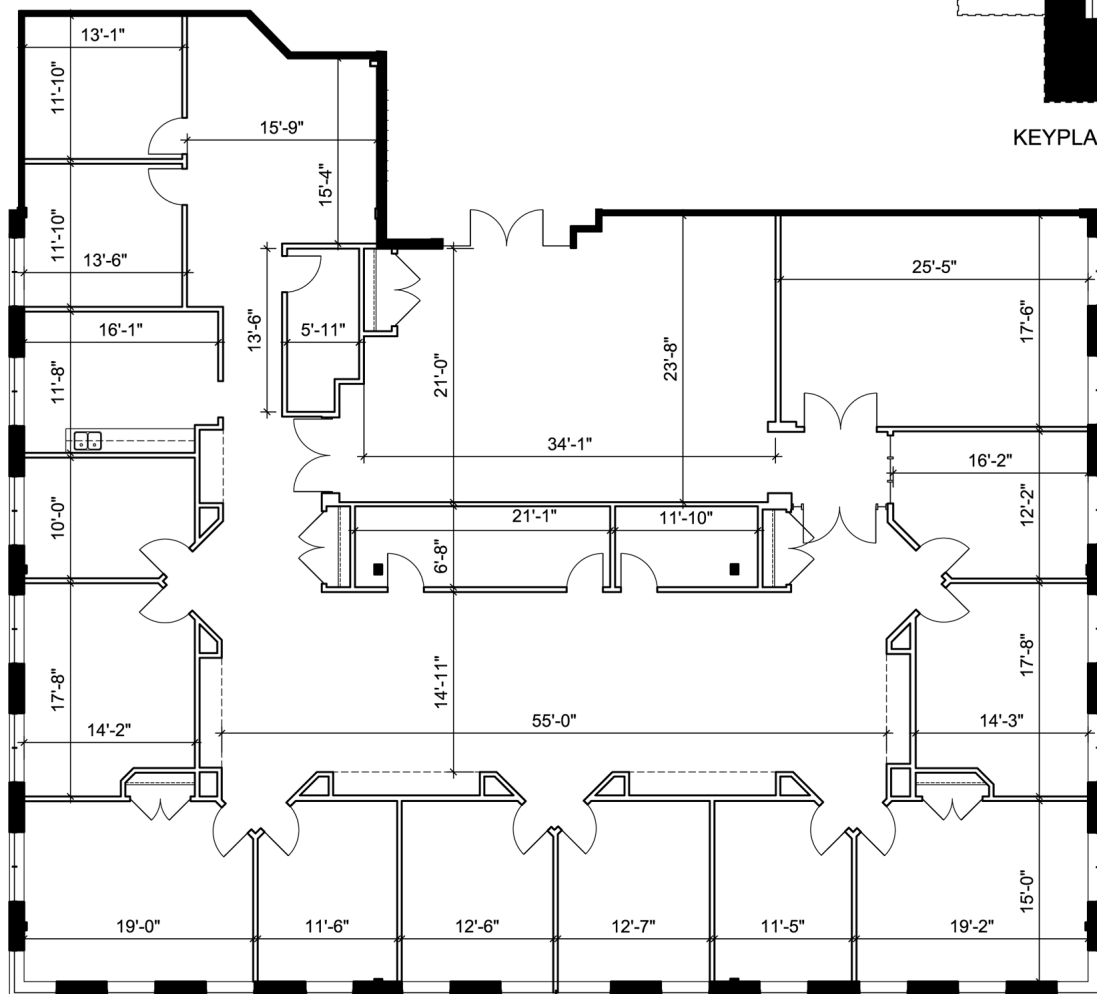


# Office - Floor Plan



\*DEMISING WALL LOCATION BETWEEN SUITE 2000 AND 2001 IS PROVIDED BY METRUS PROPERTIES



**SUITE 2001**  
**RENTABLE AREA = 6,963 SF**  
ABOVE INFORMATION ESTABLISHED ACCORDING TO BOMA / ANSI Z65.1 1996

LOCATION:

**1700 Langstaff Road**

**City of Vaughan**

Corner of Langstaff Road and Staffern Road



FOR MORE INFORMATION, PLEASE CONTACT:

**Gabrielle Mair**  
Vice President Leasing

**905.669.9714**  
[gmair@metrusproperties.com](mailto:gmair@metrusproperties.com)