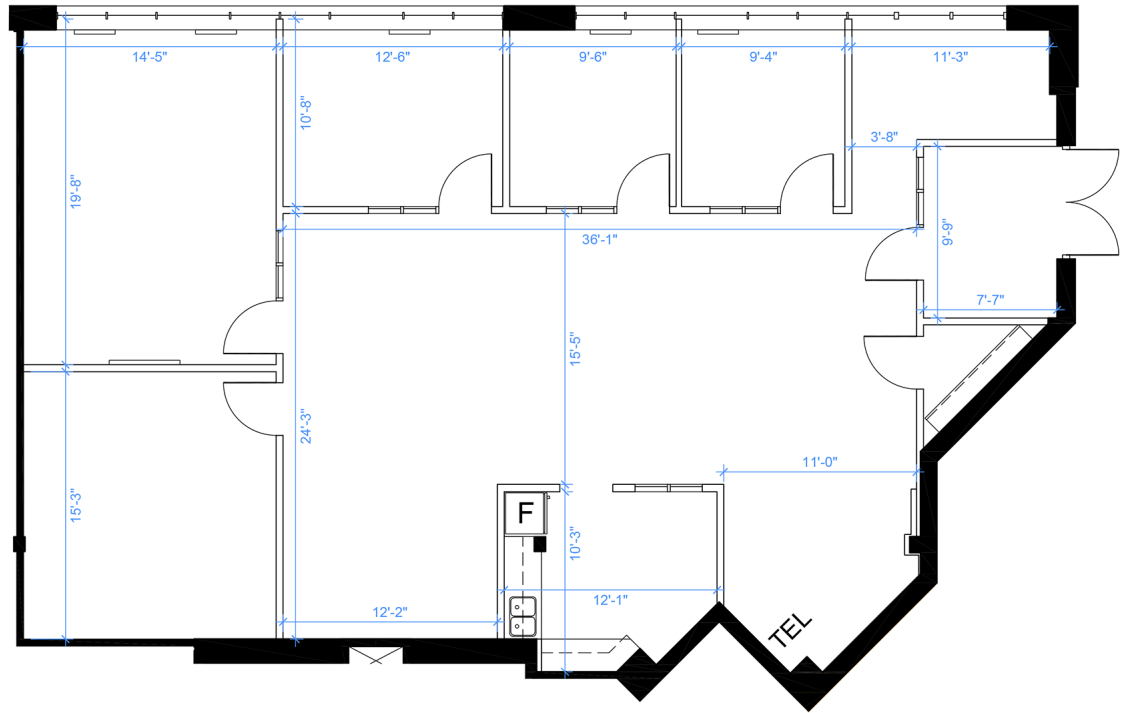
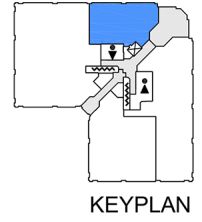


# Office - Floor Plan



Note: Drawings dimensions are approximate and for illustrative purposes only. The Landlord and Space Database Inc. make no representation as to the accuracy and/or completeness of this information.



**SUITE 1000**  
**RENTABLE AREA = 2,289 SF**

ABOVE INFORMATION ESTABLISHED ACCORDING  
TO BOMA / ANSI Z65.1 2024-A

LOCATION:

**1700 Langstaff Road**

**City of Vaughan**

Corner of Langstaff Road and Staffern Road



FOR MORE INFORMATION, PLEASE CONTACT:

**Gabrielle Mair**  
Vice President Leasing

**905.669.9714**  
[gmair@metrusproperties.com](mailto:gmair@metrusproperties.com)