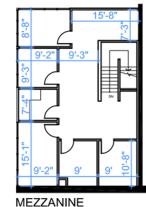


This architectural floor plan shows a building layout with several rooms and corridors. The plan includes the following dimensions and features:

- Overall Dimensions:**
 - Top horizontal: 73'-7"
 - Right vertical: 60'-1"
 - Bottom horizontal: 133'-9"
 - Left vertical: 268'-8"
 - Bottom right horizontal: 105'
 - Bottom right vertical: 42'-3"
 - Far right vertical: 195'-7"
- Rooms and Features:**
 - ELEC:** Located in the top left corner.
 - DOCK:** Located in the top right corner, with a dashed line indicating a door swing.
 - Corridors:** A central horizontal corridor is 34' wide. Other corridor widths include 32'-10", 33'-2", 33'-9", 16'-8", and 28'-3".
 - Stairs:** Located in the bottom right corner.
 - Entrances:** Indicated by door swings on the left and bottom right sides.
- Internal Dimensions:**
 - Top right vertical: 30'-2"
 - Top left horizontal: 34'
 - Top middle horizontal: 32'-10"
 - Top right horizontal: 33'-2"
 - Top far right horizontal: 33'-9"
 - Left vertical: 268'-8"
 - Bottom left vertical: 37'
 - Bottom middle horizontal: 133'-9"
 - Bottom right horizontal: 105'
 - Bottom right vertical: 42'-3"
 - Far right vertical: 195'-7"
 - Bottom right horizontal: 28'-3"
 - Bottom right vertical: 16'-8"



RENTABLE AREA = 34,710 SF
RENTABLE AREA PROVIDED BY METRUS



Metrus
PROPERTIES

The information combined herein has been obtained from source deemed reliable; however, we do not warrant it's accuracy. The information herein may change from time to time without notice. The property may be withdrawn from the market without notice.