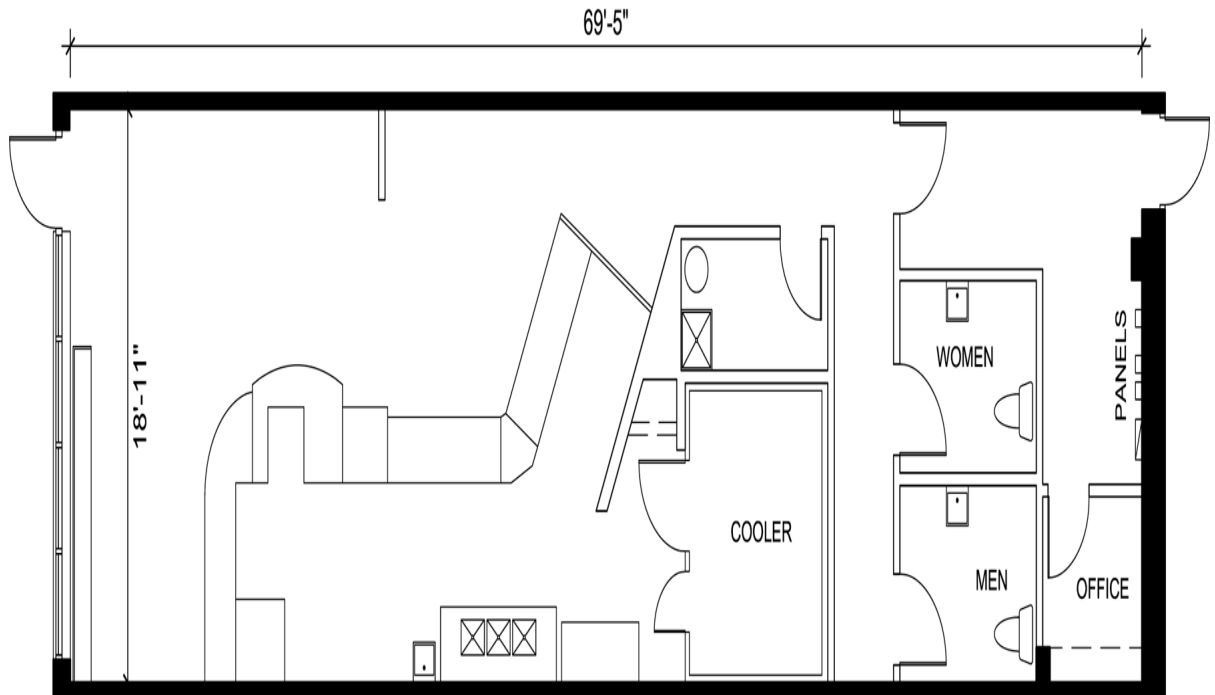
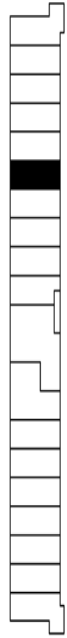


# Retail - Floor Plan



KEY PLAN



LOCATION:

**8750 Bayview Avenue**  
**Town of Richmond Hill**

North-west corner of Hwy. 7 & Bayview Ave.



FOR MORE INFORMATION, PLEASE CONTACT:

**Antoinette Grossi**  
Director of Leasing

**905.669.9714**  
[agrossi@metrusproperties.com](mailto:agrossi@metrusproperties.com)

The information combined herein has been obtained from source deemed reliable; however, we do not warrant its accuracy. The information herein may change from time to time without notice. The property may be withdrawn from the market without notice.